



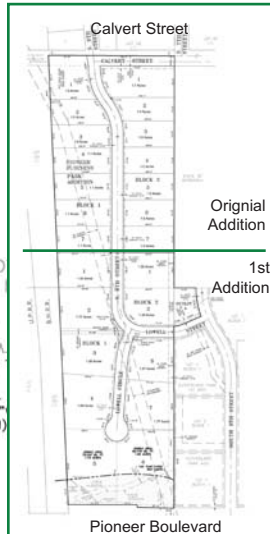
FIRST LINCOLN EQUITIES, P.C.

A COMMERCIAL REAL ESTATE BROKERAGE/CONSULTING FIRM

PIONEER BUSINESS PARK South 6th & Calvert Street Lincoln, Nebraska

ORIGINAL ADDITION

PIONEER BUSINESS PARK



To Inquire Contact:

Tom Wanser, CCIM
Commercial Sales
3900 South 6th Street, #2
Lincoln, Nebraska 68502
Phone: 402-416-4647
Email: twanser@1le.biz
www.firstlincolnequities.com

PROPERTY DESCRIPTION:

Prices From:
\$1.95-\$2.95/SF
call agent for details

Available up to
3+ AC

Zoned I-1
(Industrial District)

Excellent SW Lincoln Location
Sell or Build to Suit
Great Access
Close Proximity to Hwy 2
Please Verify Legal Descriptions



The information hereon is deemed reliable but not guaranteed by Agent. Prices are subject to change without notice.