

**KEY**

- A Covenants - ●
- B Covenants - ◆
- C Covenants - □

**Lots Available**

**LOCATION**  
Seven minutes East on Highway 2 from 84th St. and Super WalMart

**SCHOOLS**  
Bennet Elementary  
Palmyra Jr-Sr High School

**Features:**  
Electricity/Power - OPPD  
Irrigation - Rural  
Water - Rural  
Telephone - Alltel  
Gas/Propane - Aquila

**Minimum Restrictive Covenants**

- A Lots:**  
1,600 SF Minimum - Ranch Home  
1,700 SF Minimum - Multi-Level/Split Entry Home  
1,800 SF Minimum - 1 1/2 Story Home  
2,200 SF Minimum - 2 Story Home
- B Lots:**  
1,400 SF Minimum - Ranch & Multi-Level/Split Entry Home  
1,600 SF Minimum - 1 1/2 Story Home  
1,700 SF Minimum - 2 Story Homes
- C Lots:**  
1,200 SF Minimum - Ranch Home  
1,300 SF Minimum - Multi-Level/Split Entry Home  
1,400 SF Minimum - 1 1/2 Story & 2 Story Homes

**Set Backs:**  
Setbacks of dwellings from the lot lines must comply with Otoe County requirements.

**Exterior:**  
A Lots - 75% Brick  
B Lots - 50% Brick  
C Lots - 25% Brick  
Natural stone may be substituted for brick, or 100% dryvitt, STO or stucco

| Block 1 | 19   | 0.84 | Block 3 | Block 4 |
|---------|------|------|---------|---------|
| Lot 1   | 0.33 | 0.89 | 1       | 0.51    |
| 2       | 0.33 | 0.75 | 2       | 0.35    |
| 3       | 0.30 | 0.84 | 3       | 0.75    |
| 4       | 0.34 | 0.84 | 4       | 0.47    |
| 5       | 0.51 | 0.84 | 5       | 0.61    |
| 6       | 0.40 | 0.65 | 6       | 0.30    |
| 7       | 0.38 | 0.70 | 7       | 0.34    |
| 8       | 0.66 | 0.39 | 8       | 0.30    |
| 9       | 0.66 | 0.30 | 9       | 0.23    |
| 10      | 0.72 | 0.44 | 10      | 0.23    |
| 11      | 0.47 | 0.44 | 11      | 0.45    |
| 12      | 0.34 | 0.58 | 12      | 0.34    |
| 13      | 0.31 | 0.77 | 13      | 0.25    |
| 14      | 0.87 | 0.97 | 14      | 0.25    |
| 15      | 0.43 | 0.67 | 15      | 0.25    |
| 16      | 0.57 | 0.45 | 16      | 0.25    |
| 17      | 0.60 | 0.33 | 17      | 0.25    |
| 18      | 0.54 | 0.33 | 18      | 0.25    |
|         | 0.67 | 0.47 |         |         |

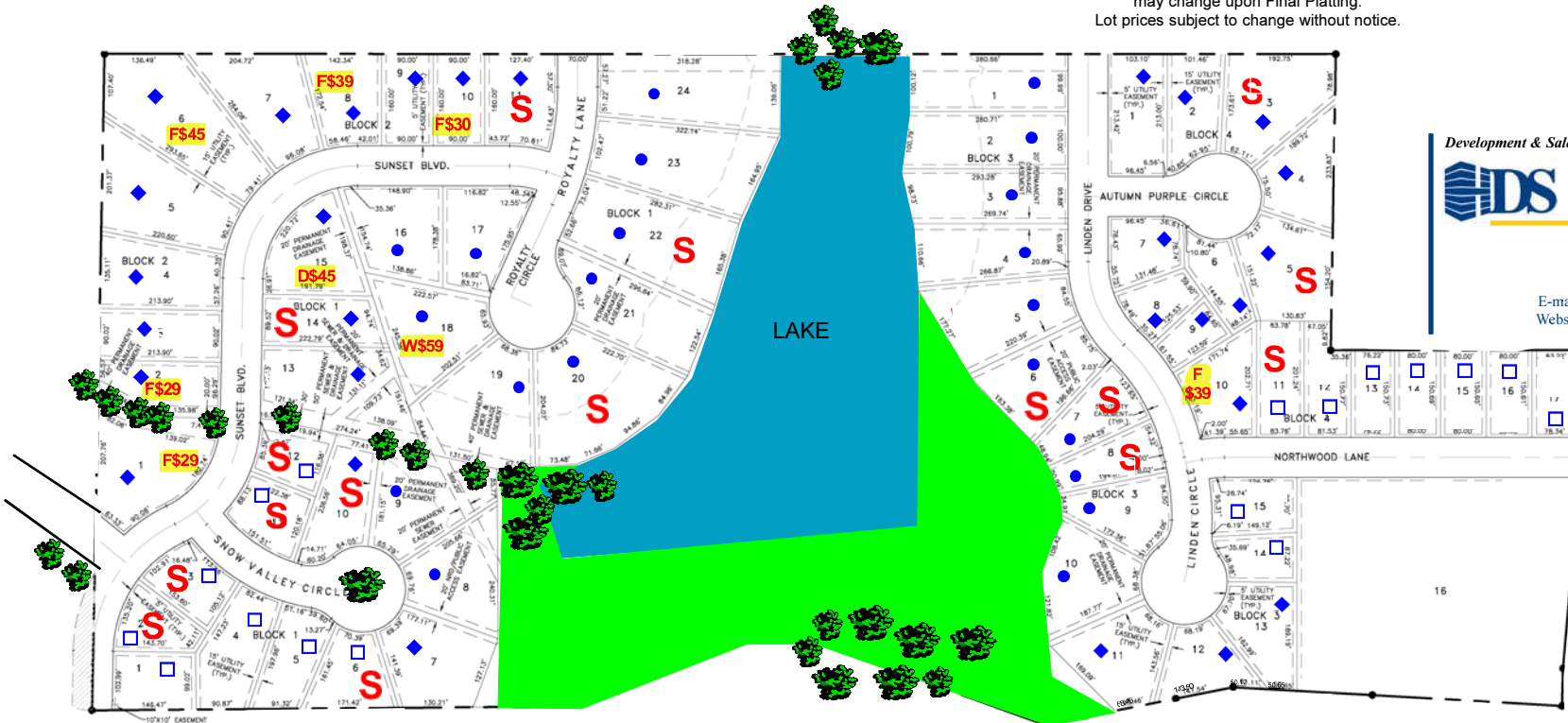
Lot dimensions and lot and block numbers may change upon Final Platting.  
Lot prices subject to change without notice.



of Otoe County  
**FINAL PLAT**

Development & Sales by:  
**DS** Hampton Development Services, Inc.  
Real Estate Development  
Dedicated to creating the finest neighborhoods.

Tom Wanser  
Office: 402/416-4647  
E-mail: twanser@lle.biz  
Website: www.hamptonlots.com



Highway 2

County Road No. 2

